

## NE8FAV-SD-AE

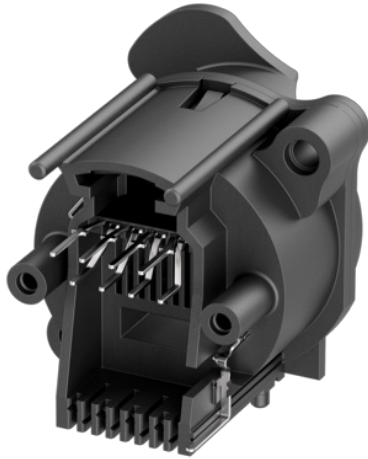
Vertical PCB mount RJ45 receptacle, A-Series cutout with latch lock, with 2 additional screw-domes for fixing the connector on the PCB (fixing screws included), max. panel thickness 3 mm.



The etherCON Series is a ruggedized and lockable RJ45 connector system, optimized for pro audio, video and lightning network applications. The chassis connectors are shaped to fit into standardized panels out of the entertainment industry.

The all plastic A-Series offers the most space saving and cost effective design.

Attention! Does not intermate with CAT6 cable connector NE8MC6-MO and NKE6S\* cables.



## Features & Benefits

- Accommodates rugged etherCON NE8MX\* or any standard RJ45 plug
- Most space saving and cost effective design
- SD-Version with screw domes to fix connector onto PCB securely
- PoE type 4 class 8 (100W) acc. IEEE 802.3bt
- Approved latch lock system
- CAT5e / Class D according to TIA/EIA 568C and ISO/IEC 11801
- Compound material of push tab improves ESD protection

## Technische Informationen

Produkte	
<b>Title</b>	NE8FAV-SD-AE
<b>Type</b>	Chassis
<b>Connection Type</b>	etherCON
<b>Gender</b>	Female

Elektrisch	
<b>Contact resistance</b>	<50 mΩ
<b>Dielectric strength</b>	1 kVdc
<b>Frequency range</b>	1 – 100 MHz
<b>Insulation resistance</b>	> 0.5 GΩ
<b>Rated current per contact</b>	1.5 A
<b>Rated voltage</b>	≤ 57 V
<b>Transmission performance</b>	CAT5e acc. to TIA/EIA 568C channel specifications CLASS D acc. to ISO/IEC 11801 channel specifications
<b>Power over Ethernet</b>	PoE type 4 class 8 (100W) acc. IEEE 802.3bt

Mechanische Daten	
Insertion force	≤ 20 N
Withdrawal force	≤ 20 N
Lifetime	> 1000 mating cycles
Panel thickness	Max. 3 mm (0.12")
Wiring	Vertical PCB mount
Locking device	Rear mounting
Chassis shape	A
Mounting	A-Screw

Material	
Contact plating	0.2 µm Au over Ni plating
Contacts	Bronze (CuSn8)
Locking element	HPPA
Shell	PBTP 15 % GR

Umwelt	
Flammability	UL 94 V-0
Temperature range	-30 °C to +80 °C
Solderability	Complies with IEC 68-2-20
Standard compliance	ISO/IEC 11801-1 Ed. 1.0 (2017-11) IEC 60603-7-3 Ed.2.0 (2010-04) IEC 60512-99-002 Ed.2.0 (2022-01) IEC 60512-9-3 (2011-06)