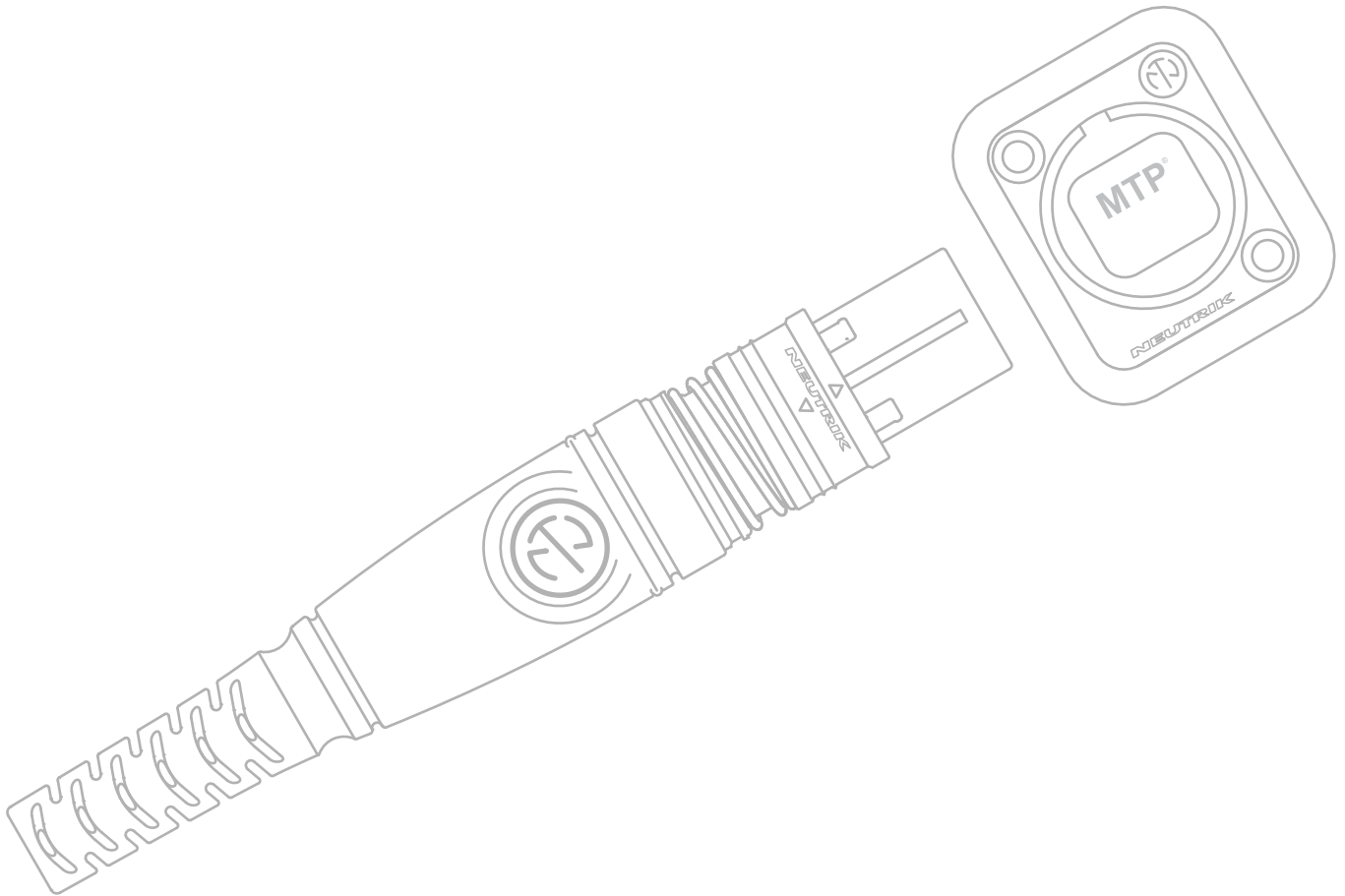




HANDLING INSTRUCTION

opticalCON® MTP® | Maintenance





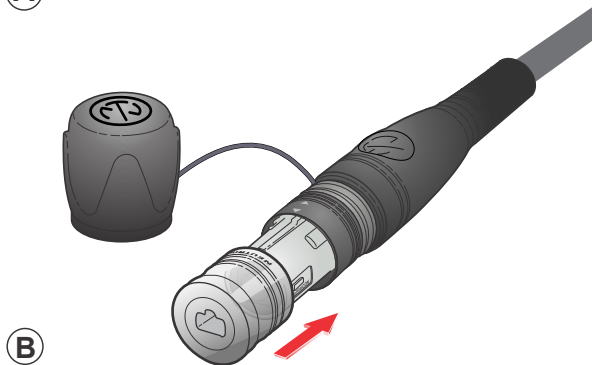
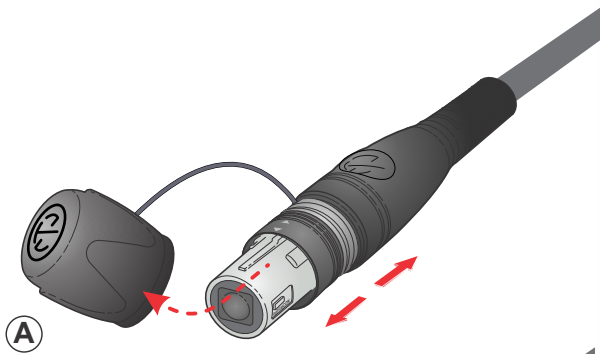
CAUTION: Laser radiation, do not look directly into beam of light!

The sealing shutter mechanism of the opticalCON® avoids contamination of the MTP® ferrule locked inside. The dust-proof design reduces maintenance intervals to a minimum; if nevertheless necessary, follows the maintenance procedure below to avoid damages on the due to inproper cleaning.

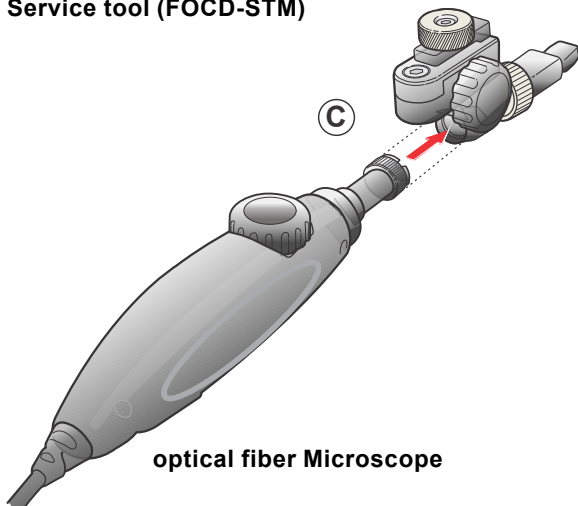
A. Connector Cleaning / Inspection

Intervall: every 500 matings recommended

- Tools:**
- NEUTRIK® MTP® service Tool (FOCD-STM)
 - Dry Cleaner MPO/MTP® (FOCD-DCM)
 - optical fiber video probe



Service tool (FOCD-STM)



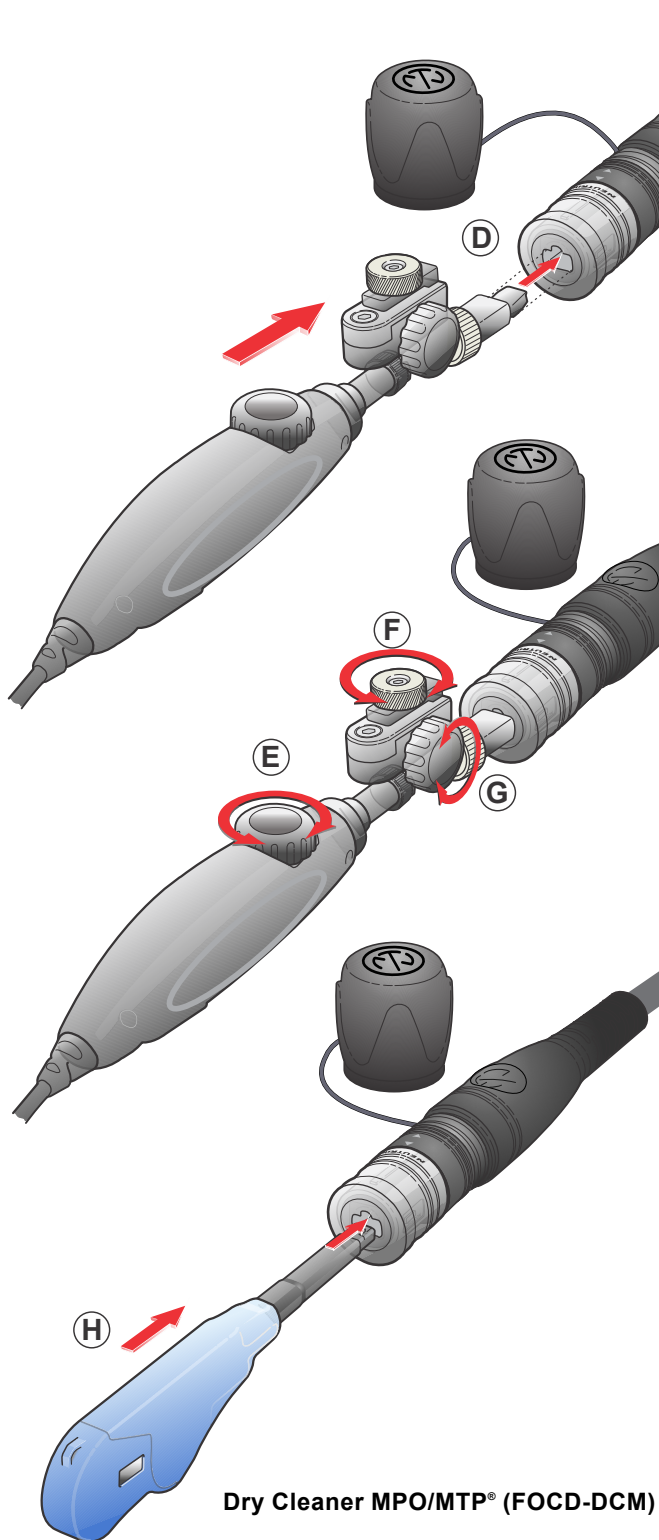
optical fiber Microscope

1. Disconnect both cable ends for safety reasons. Invisible laser radiation may be emitted from disconnected fibers or connectors. Do not stare into beams or view directly with optical instruments.

2. Remove dust cap from the connector (A) and mount NEUTRIK FOCD-STM inspection tool on it until it is locked (B).

3. Prepare the optical fiber video probe with the correlate singlemode or multimode tip (C). Under the following QR-code you can find a list with appropriate video probs and tips.





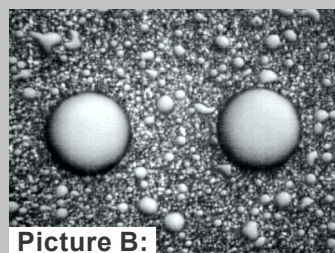
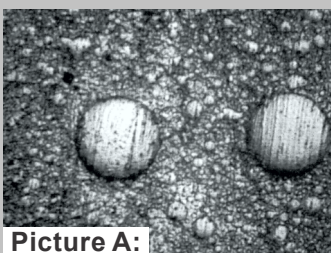
4. Insert the video probe tool into our NEUTRIK FOCD-STM service tool (D).

5. To inspect the MTP® ferrule surface focus the video probe by rotating the focus wheel (E) and to switch (F) or move to the next ferrule rotate the wheels on the tip (G).

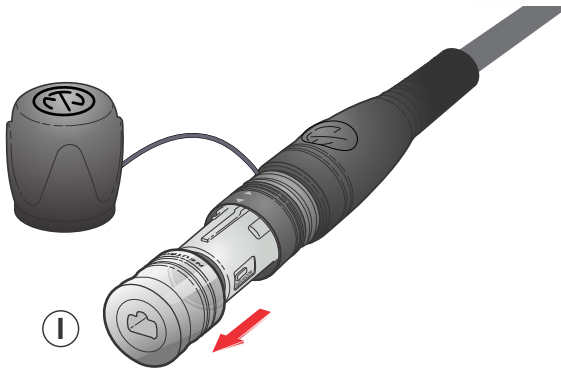
6. Clean the MTP® surface with the Dry Cleaner over the NEUTRIK MTP® service tool.

7. Push back and forth the dry cleaner to start the cleaning procedure (H). An endless lint free tape removes dust particle on the ferrule surface of the MTP® connector.

8. Check the condition of the MTP® ferrule surface again and if necessary repeat step 7.

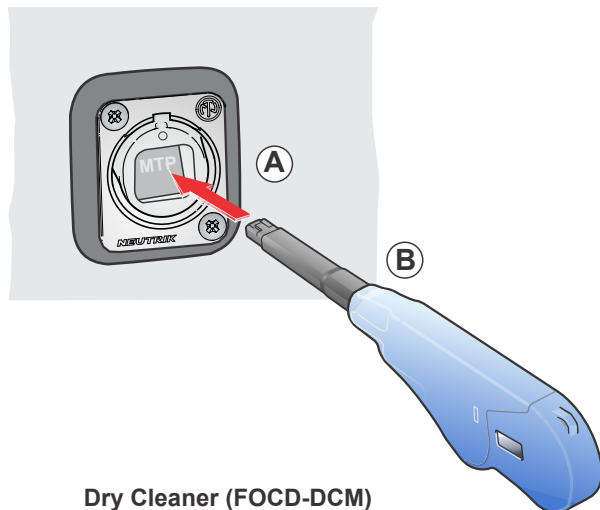


During inspection procedure, make sure that each ferrule is completely free of dust. As a reference the ferrule has to look as illustrated on Picture B.



9. After the cleaning procedure unlock the NEUTRIK inspection tool (I).

B. Chassis Cleaning



Dry Cleaner (FOCD-DCM)

Dry cleaning using FOCD-DCM

1. Remove dust cap and insert the tip of the dry cleaning cleaner.
2. Guide the tip to the dry cleaner into the chassis housing (A).
3. Push back and forth the dry cleaner to start the cleaning procedure (B). An endless lint free tape removes dust particle on the ferrule surface of the MTP® connector.
4. After cleaning procedure, remove dry cleaner and covers the tip with the dust cap.



Find more details of opticalCON on www.neutrik.com.

NEUTRIK AG	LI	T: +423 / 237 24 24	F: +423/232 53 93	NEUTRIK France	FR	T: +33 1/4131 6750	F: +33 1/4131 0511
NEUTRIK USA Inc.	USA	T: +1 704 / 972 3050	F: +1 704/438 9202	NEUTRIK Tokyo Ltd.	JP	T: +81 3/3663 4733	F: +81 3/3663 4796
NEUTRIK (UK) Ltd.	UK	T: +44 1983 / 811 441	F: +44 1983/811 439	NEUTRIK Hong Kong Ltd.	HK	T: +852/2687 6055	F: +852/2687 6052
NEUTRIK Vertriebs GmbH	DE/NL/AT/DK	T: +49 8131 / 280 890	F: +49 8131/280 830	NEUTRIK India Pvt. Ltd.	IND	T: +91/982 05 43 424	F: +91/22 26163 540

Draft. Nr.: BDA 518 | Update: 11.05.2017 | Data subject to change without prior notice. ©2017 NEUTRIK®. ALL RIGHTS RESERVED. NEUTRIK® is a registered trademark.