



ASSEMBLY INSTRUCTION

speakON® Chassis Connector

NL4MDXX-H-2 & NL4MDXX-H-3

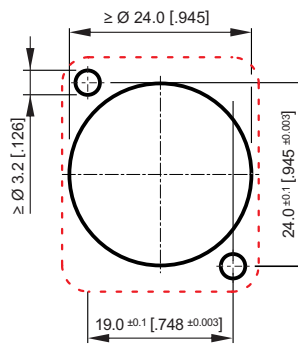
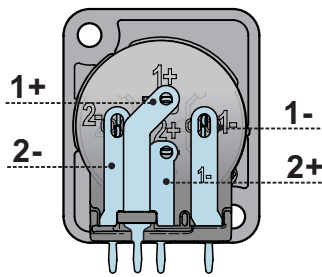
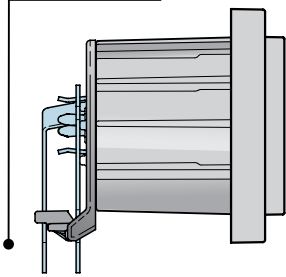
! ATTENTION:
speakON® is NOT to be used as a mains or power supply connector!

A ASSEMBLY INFORMATION

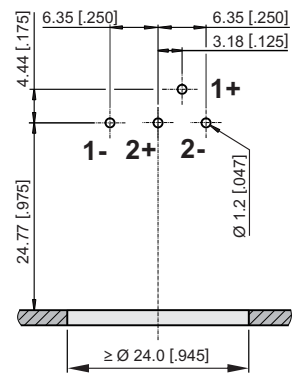
- 1** CONNECTION
- 2** WIRING
- 3** PANEL CUTOUT (Rear Side)
- 4** PCB Layout (Component Side)

NL4MDXX-H-2

Horizontal PCB

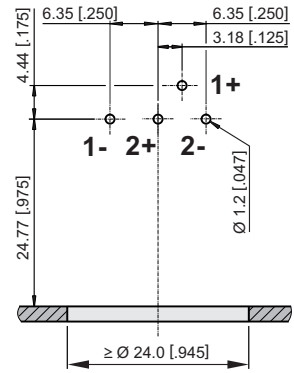
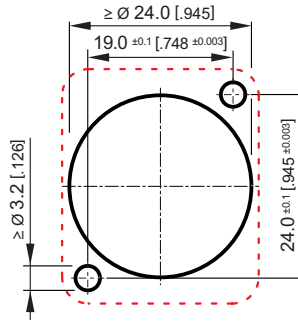
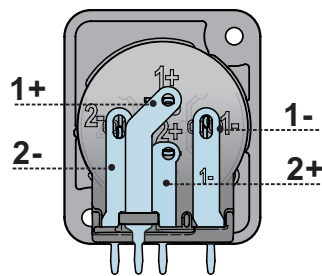
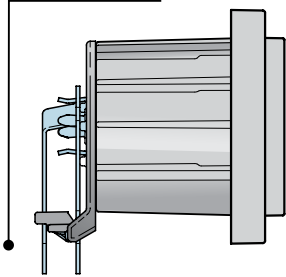


Tolerance ±0.05 [±.002]



NL4MDXX-H-3

Horizontal PCB



! MOUNTING

! ATTENTION
Maximum allowable torque M_A

	→	←
(screws not included)	Rear assembly	Front assembly
NL4MDXX-H-2 Mirrored self-tapping screw holes for Neutrik A-screw (rear mount only)	90 Ncm	-
NL4MDXX-H-3 Standard orientation self-tapping screw holes for Neutrik A-screw (rear mount only)	90 Ncm	-

B More Information on the www.neutrik.com

<https://www.neutrik.com/products/audio/speakon>



Draft. Nr.: BDA 595 V2
Update: 2023-10-06

Neutrik AG | LI-9494 Schaan
www.neutrik.com

Data subject to change without prior notice. © 2023 NEUTRIK®. NEUTRIK® are registered trademark of Neutrik AG. ALL RIGHTS RESERVED.

