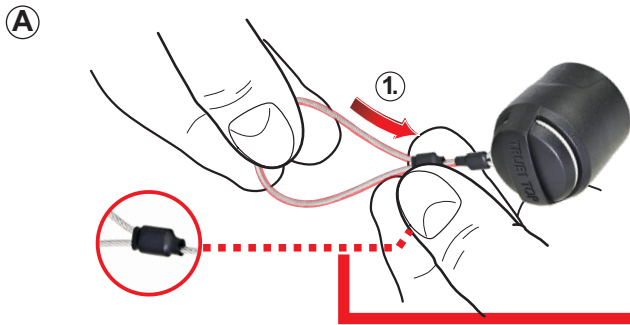




# ASSEMBLY INSTRUCTION

- SCF-TRUE1-01 | Sealing cap for female powerCON TRUE1 cable connector
- SCM-TRUE1-01 | Sealing cap for male powerCON TRUE1 cable connector



Open the loop **1** of the NEUTRIK sealing cap as shown in the figure A.

It is normal for the loop to be slightly stiff. This prevents the loop from coming loose automatically when already tightened.



Slide the open loop **2** over the connector and position it at the junction of the cable **3** and the connector.



Slide the loop close to the rear of the connector **4** and tighten it **5**.

For overmolded cable connectors, position the loop on the anti-kink boot.



D



click



TWIST-LOCK LATCH



FINISHED SEALING CAP ASSEMBLY

### Cap positioning:

Align the cap's guide slot to the corresponding notch on the connector **6**. Slide the cap onto the plug. Then turn the cap clockwise to lock it **7**. Correct locking is achieved when the latch springs forward and an audible "click" is heard. ✓

E



1. OPEN TWIST-LOCK



### DISASSEMBLY - Open the cap:

Retract the latch. **1** Rotate the cap counterclockwise and pull it off **2** the connector. ✓

Find more details on  
[www.neutrik.com](http://www.neutrik.com)



Draft. Nr.: BDA 693 V1  
Update: 2023-09-27

Neutrik AG | LI-9494 Schaan  
[www.neutrik.com](http://www.neutrik.com)

Data subject to change without prior notice. © 2023 NEUTRIK®, NEUTRIK® are registered trademark of Neutrik AG. ALL RIGHTS RESERVED.

**NEUTRIK**  
A brand of the Neutrik Group